

# Projects

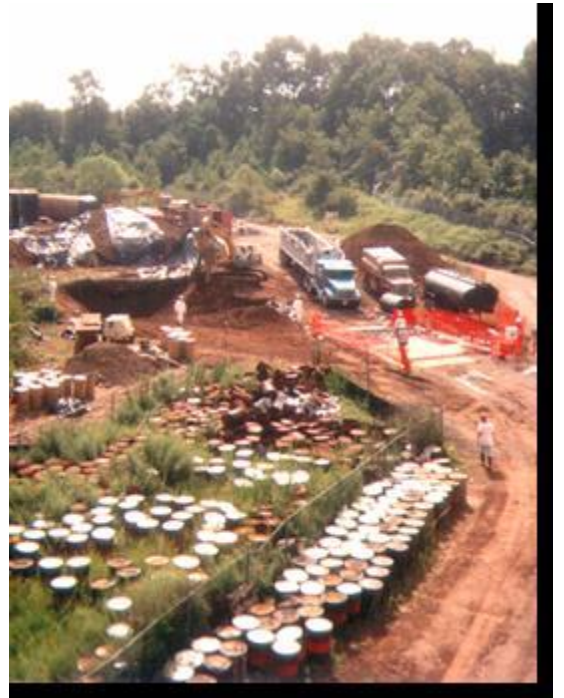
## Caldwell Trucking Superfund Site – OU1

Fairfield Township, Essex County, NJ



During remediation, Conti encountered liquid, contaminated with trace levels of PCBs, in underground storage tanks (USTs). We mobilized a multi-media and Granular Activated Carbon treatment system to cost-effectively remove the PCBs.

Acting on behalf of the clients' technical committee, Conti presented a sampling plan to USEPA and New Jersey DEP. Implementation of the plan identified numerous waste classifications and ultimately enabled us to reduce the volume of material requiring incineration by almost 60%.



### Project Information

<b>Owner:</b>	Caldwell Trucking Site Trust Fund
<b>Client:</b>	de maximis, inc.
<b>Contract Type:</b>	Fixed Price
<b>Value:</b>	\$2,148,683
<b>Type of Work:</b>	Soil Excavation, UST Removal
<b>Contaminants:</b>	VOCs, lead, PCBs

### Scope of Work

- Excavated, transported and disposed 3,000 tons of VOC-, lead-, and PCB-contaminated soil. Precise excavation schedule allowed concurrent disposal at multiple facilities. Worked in Level B and Level C PPE.
- Removed 1-40,000 gal, 1-25,000 gal and 2-12,000 gal USTs.
- Developed Sampling and Analysis Plan (SAP) and negotiating approval with EPA Region 2 and NJDEP.
- Managed simultaneous offsite disposal of five waste streams at four different waste disposal facilities in three different states.
- Directed waste management activities, including sampling, data analysis, waste classification; ensuring disposal facility acceptance, preparing manifests.
- Excavated and performed on-site stabilization of over 1,100 cubic yards sludge-contaminated soil containing lead and cadmium.
- Mobilized multi-media and granular activated carbon treatment system to remove PCB-contaminated liquid in USTs.
- Developed and proposed an *in-situ* waste sampling and classification plan designed to improve characterization of the material.
- Conti met the project schedule, which required remediation be performed while a nearby school was in recess.